

# Homelifts

## Maison 100 E

## Maison 100 H



KLEEMANN Maison range is an affordable and attractive solution that goes beyond your expectations for home mobility. Our reliable and comfortable home lifts feature premium ride quality, low energy consumption and easy installation for minimum disruption.

With dedicated service and a wide range of design selections, **KLEEMANN lifts your experience and upgrades the interior and exterior of your most precious space.**





# Maison 100 H

Safety and style with this value for money hydraulic home lift solution, with minimum space requirements

Type of lift > Hydraulic

## Technical specifications

Model	Maison100 H
Rated load (Kg)	Up to 385
Max travel (m)	12
Max number of stops	5
Max speed (m/s)	0,15* - 0,25** - 0,30**
Pit depth (mm)	100* - 130**
Headroom (mm)	2500
Maximum car entrances	2
Power supply	Single phase or three phase
Complies with	* Machinery Directive 2006/42/EC ** AS1735.18



## Recommended uses

Private residences  
Low traffic buildings

## Description & features

Ideal for comfort and ease, Maison100 H, is designed and manufactured according to Machinery Directive 2006/42/EC and meets any need for transportation and mobility. A value for money solution that provides access inside or outside a private residence or low storey public buildings and guarantees safety and style.

### Value for money

Its very low energy consumption (lower than a kitchen oven) in conjunction with its exceptional performance, makes Maison100 H the ideal value for money choice. With 100mm minimum pit depth and 2400mm headroom required, it is perfectly suitable for buildings with or without concrete shaft and with shaft pit and headroom limitations.

### Plug n' play solution

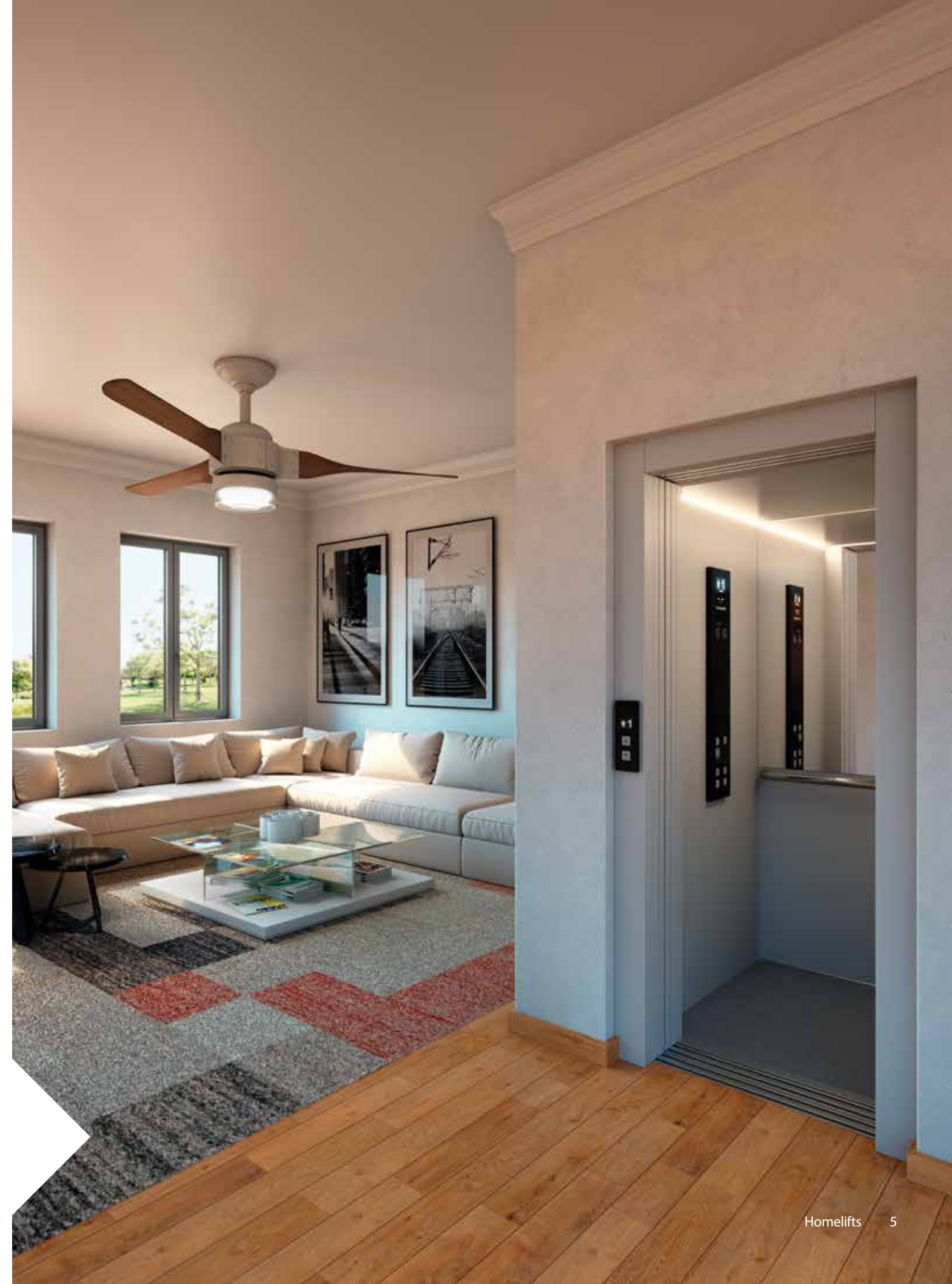
Prewired shaft wiring and single-phase power supply.

### Optimum use of space

The pit and headroom requirements are amongst the most competitive in the market for enclosed cabin platform lifts. Maison100 H offers optimum space efficiency by providing the opportunity of installing larger car in a standard shaft.

### Premium ride quality

Maison100 H offers a premium ride quality, with the new controller Genius20, with shaft copy system for precise floor levelling and a 2-speed hydraulic valve.





# Maison 100 E

The innovative electric cabin platform lift, with premium design, that makes best use of available space and is extremely energy efficient

Type of lift > Electric

## Technical specifications

Model	Maison100 E
Rated load (Kg)	Up to 385
Max travel (m)	12
Max number of stops	5
Max speed (m/s)	0,15* - 0,25** - 0,30**
Pit depth (mm)	100* - 130**
Headroom (mm)	2500* - 2550**
Maximum car entrances	2
Power supply	Single phase
Complies with	* Machinery Directive 2006/42/EC ** AS1735.18



## Recommended uses

Private residences  
Low traffic buildings

## Description & features

Acknowledging the importance of space availability, KLEEMANN introduces Maison100 E, with 100mm minimum pit depth and 2500mm headroom required. Available with semi-automatic or automatic doors, Maison100 E can be also provided with an aluminum shaft construction where a masonry shaft is not available.

### Premium Design

Cabin's modular design provides the possibility of different claddings for the surrounding walls while its minimalist design creates an outstanding ambience

### Plug n' play solution

Prewired shaft wiring and single-phase power supply.

### Fast and easy installation

Smart and compact design for installation in much shorter time compared to other electric platform lifts.

### Low noise levels

Innovative electric drive (VVVF controlled) guarantees remarkably low noise levels in and out of the cabin.





# Design options

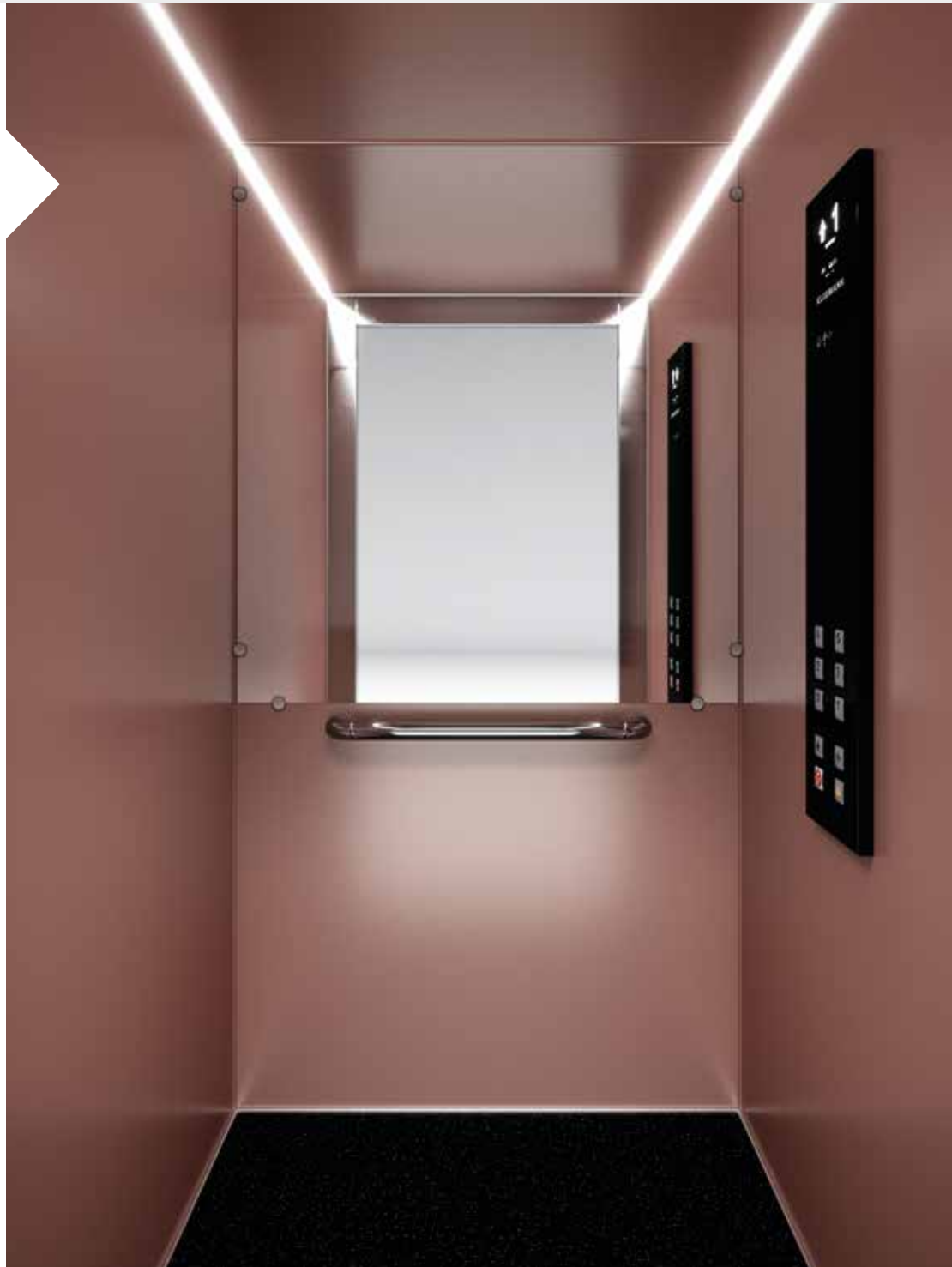




Maison100 H & E are provided with a fully enclosed cabin. A panoramic version is also available with up to two glass walls. The ceiling is detachable, facilitating the maintenance procedure. Available in stainless steel, skinplate or paint finishing and with LED strip lighting, it creates an outstanding ambience inside the cabin.

with  
paint

**Walls** Paint Copper Swift  
**Ceiling** Paint Copper Swift  
**Floor** Rubber 6801  
**Handrail** K3  
**Mirror** Half height / Full width  
**COP** GN-SC300



with  
skinplate

**Walls** Skinplate A90GTA  
**Ceiling** Paint Abstract Light  
**Floor** Rubber 6801  
**Handrail** K3  
**Mirror** Half height / Full width  
**COP** GN-SC300

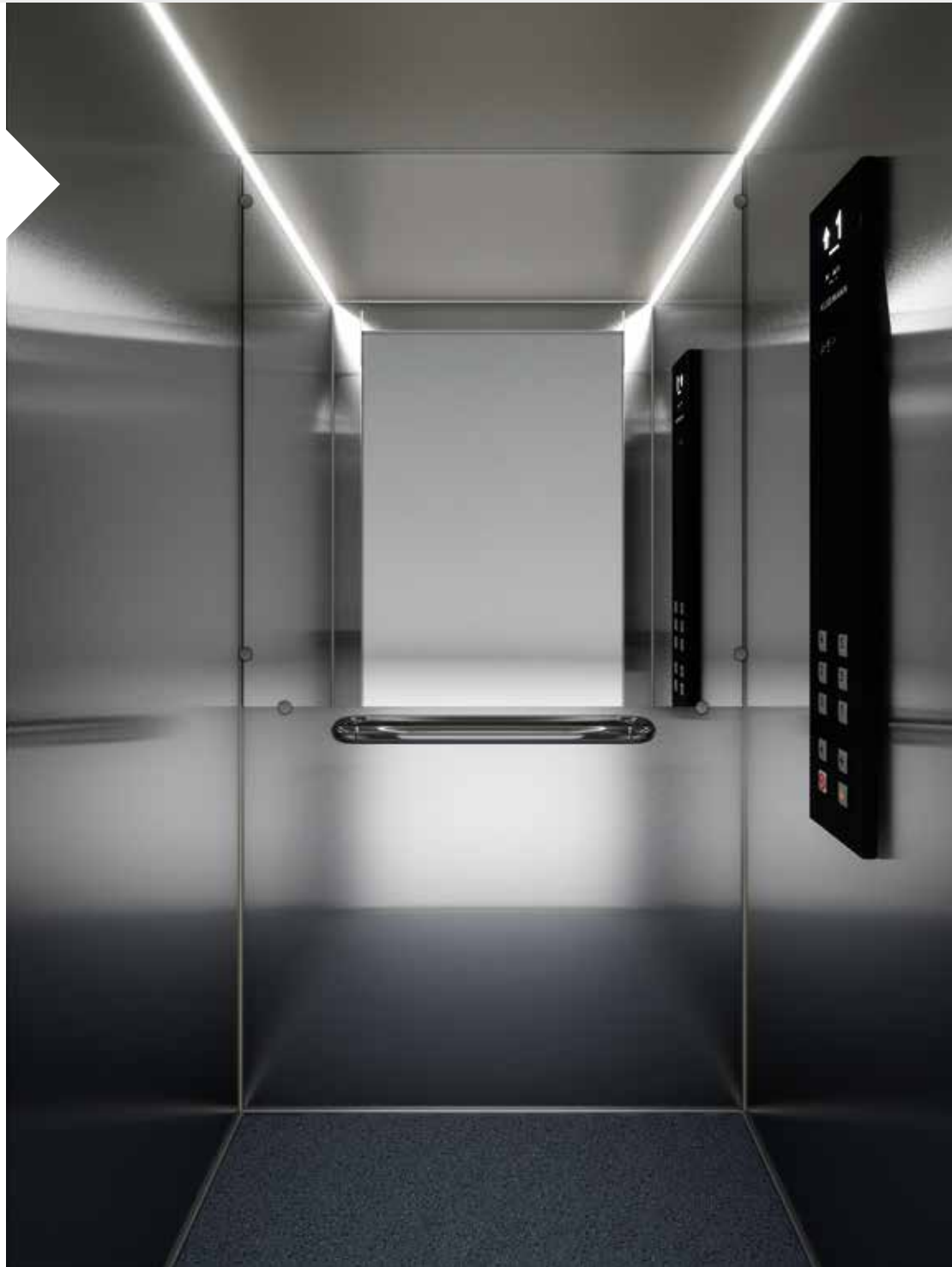






with  
stainless steel

**Walls** Stainless Steel Satin  
**Ceiling** Stainless Steel Satin  
**Floor** Rubber 6768  
**Handrail** K3  
**Mirror** Half height / Full width  
**COP** GN-SC300



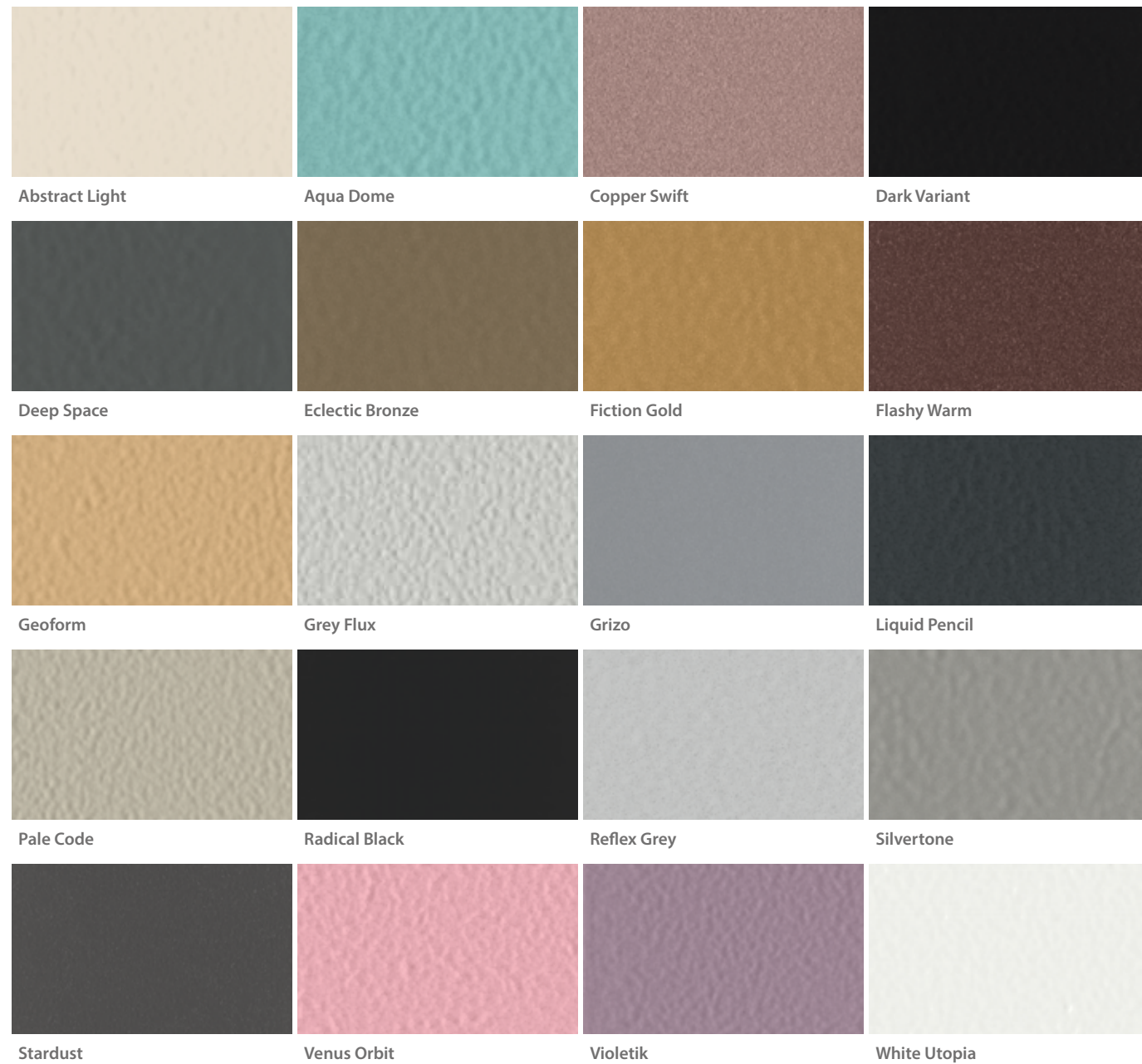
panoramic

**Walls** Paint Liquid Pencil  
**Ceiling** Paint Liquid Pencil  
**Floor** Rubber 6801  
**Handrail** K3  
**COP** DKC





## Wall finishes Paint



## Skinplate



## Stainless Steel



Colours may differ slightly from those shown in the brochure, owing to the limitations of the printing process.

Pictures of the materials illustrate detailed part of each material and not its rendering on the cabin surface.

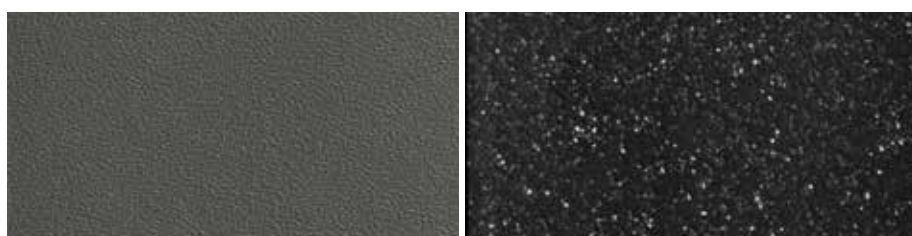
Floors  
Laminate



8096

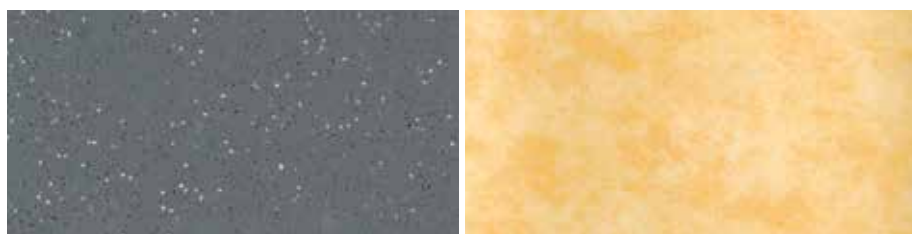
8630

Rubbers



6727

6801



6768

MX19101

Floor recess is also available up to 12mm height and 30kg weight.

Handrail



K3





## Aluminum Shaft

Maison100 H & E are available with a robust and elegant aluminum structure, suitable for indoor or outdoor environments, for lift installations where concrete shafts are not available. KLEEMANN aluminum shafts are designed by expert engineers and can be fully customized to your architectural needs with a variety of aesthetic choices for both structure and shaft cladding.



### Paint



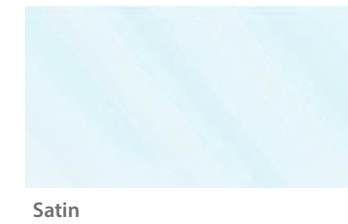
### Skinplate



### Stainless steel



### Glass



### Cabinet



The new, re-designed controller cabinet is of very compact dimensions (W1m x H1m) and can be easily positioned in small spaces so as not to cause any obstructions.

Shaft structure and cabinet are available only in paint finishing.

Colours may differ slightly from those shown in the brochure, owing to the limitations of the printing process.

Pictures of the materials illustrate detailed part of each material and not its rendering on the cabin surface.



## Automatic doors



Standard



Big Vision

### AVAILABLE FINISHES

All doors are available in the same finishes as those of the cabin

## Swing doors



C310



C520



Blind

Colours may differ slightly from those shown in the brochure, owing to the limitations of the printing process.

Pictures of the materials illustrate detailed part of each material and not its rendering on the cabin surface.



# Operating panels

## Characteristics

- Available also with Dot Matrix display
- Compatible also with buttons B37R
- Out of order or Call activation key switch are available



B37Q  
DIMENSIONS  
(W) 37 mm x (H) 37



K37  
DIMENSIONS  
(W) 37 mm x (H) 37



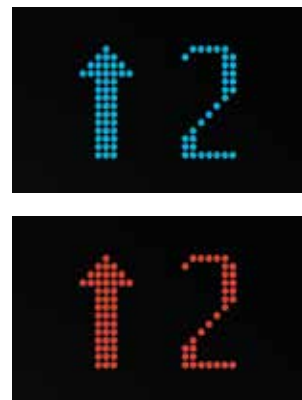
B37R  
DIMENSIONS  
ø 30 mm



Car Operating Panel  
GN-SC300 DIMENSIONS  
(W) 200 mm x (D) 24 mm (H) 1000 mm



Landing Operating Panel  
GN-SL300 DIMENSIONS  
(W) 87 mm x (D) 22 mm (H) 250 mm



Dot Matrix Display

AVAILABLE FINISHES  
Black plexiglass



Car Operating Panel  
DKC DIMENSIONS  
(W) 200 mm x (D) 24 mm (H) 1000 mm

AVAILABLE FINISHES  
Satin



Car Operating Panel  
FPY-800  
(W) 800 mm x (D) 60 mm (H) 800 mm



Landing Operating Panel  
AKL DIMENSIONS  
(W) 85 mm x (H) 265 mm

Colours may differ slightly from those shown in the brochure, owing to the limitations of the printing process.

Pictures of the materials illustrate detailed part of each material and not its rendering on the cabin surface.



The standard landing operating panel includes button B37 and enter sign NT-32 which are placed directly on the door frame. The enter sign NT-32 is an economic standard option that can be used instead of the display. It is placed on the door frame over the call button and it lights up when the car is behind the door.



AKL-31



AKL-32



NT-32

Door frame solution  
with no display

Colours may differ slightly from those shown in the brochure, owing to the limitations of the printing process.

Pictures of the materials illustrate detailed part of each material and not its rendering on the cabin surface.

KLEEMANN has a worldwide presence in over 100 countries with local presence in key market points. It stands out for its product range, high quality and control standards, world class design and for its expertise in custom made solutions. Constantly monitoring the global market trends, the company continues to innovate, grow, develop, and improve while consistently remaining in tune with its global character.



**KLEEMANN**  
Your 1<sup>st</sup> Choice in Lifts

KLEEMANN HELLAS SA  
Kilkis Industrial Area  
P.O. BOX 25, Kilkis, 611 00 - Greece  
G.E.M.I. 14486435000

Colours may differ slightly from those shown in the brochure, owing to the limitations of the printing process. Pictures of the materials illustrate detailed part of each material and not its rendering on the cabin surface.

While every effort has been made to ensure information accuracy, KLEEMANN bears no responsibility for typographic errors or omissions.